



SERVICE BULLETIN

Product : Color monitor	Bulletin No. : 01-C/M-E0040
Model : All monitor	Bulletin Date : Sep.24,2001
	ECN Date : Sep.24,2001
SUBJECT : DDC data input instruction	

Background : All monitor have DDC data in EEPROM IC on main board.
 DDC data contains serial number,model name,resolution,production week and enables plug & play function.
 In case of replacing main board or EEPROM IC, DDC data should be inputed again.

Model name : All color monitors
 (Some old model do not have DDC data)

Solution Put DDC data with attached work instruction.

Application Date :

(Interchangeability Code : * I.C)

Location No.	OLD (before) Parts		NEW (changed) Parts		*
	SEC Code	Description	SEC Code	Description	I.C

Type	A type	B type	C type	D type	E type	F type
Interchange Type Code (* I.C)	OLD → Early (Parts) (Prod.) NEW → Late	OLD → Early (Parts) (Prod.) NEW → Late	OLD → Early (Parts) (Prod.) NEW → Late	OLD → Early (Parts) (Prod.) NEW → Late	Parts Addition (None New)	Parts deletion (Old Del.)

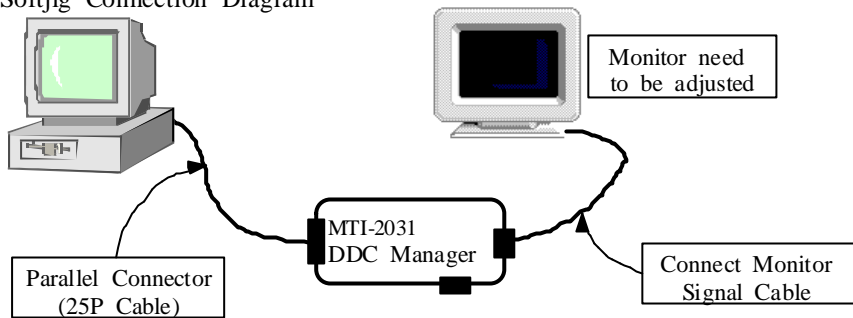
Application Reference () Only Defected sets () Whole sets ()

Attachment Schematic Diagram () Component Lay-out () Exploded View ()
 Mechanical Diagram (0) None () Others ()

Product Month : - Aug all	Serial No. (~ from)	
Published by : C.J.Oh	Checked by : C. K.Park	Approved by : Y.K.Yoo

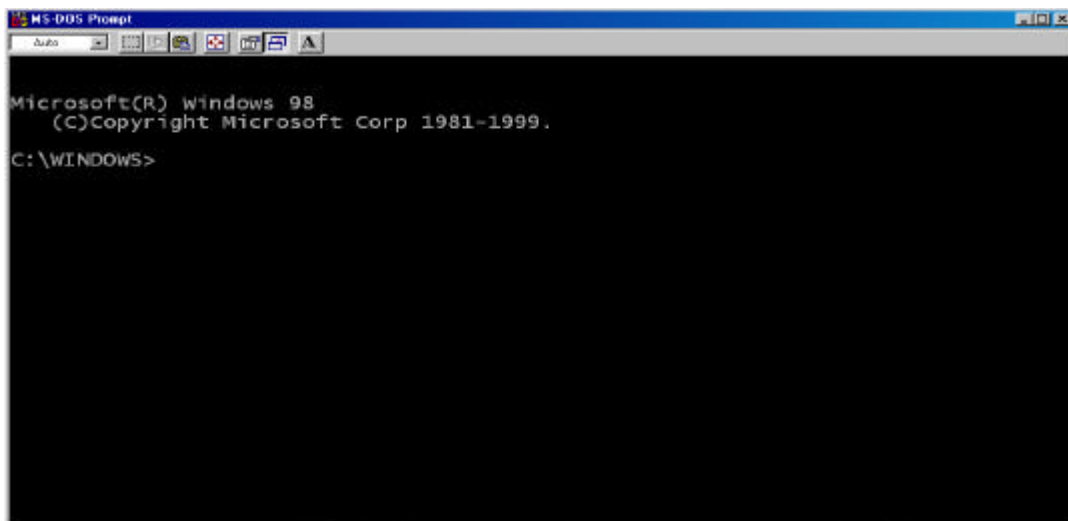
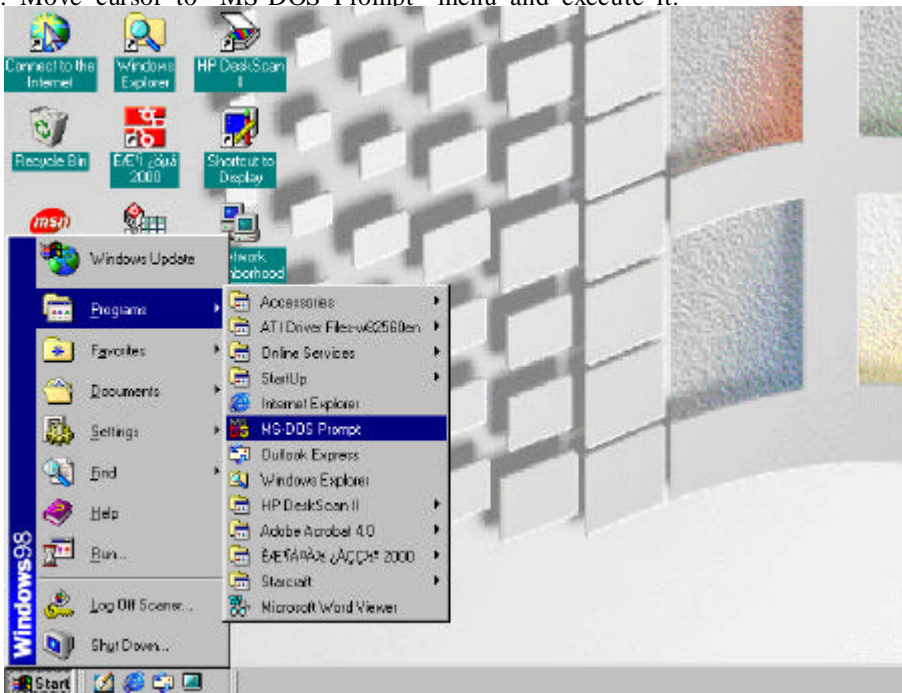
Monitor DDC Input Instructions

A. Softjig Connection Diagram

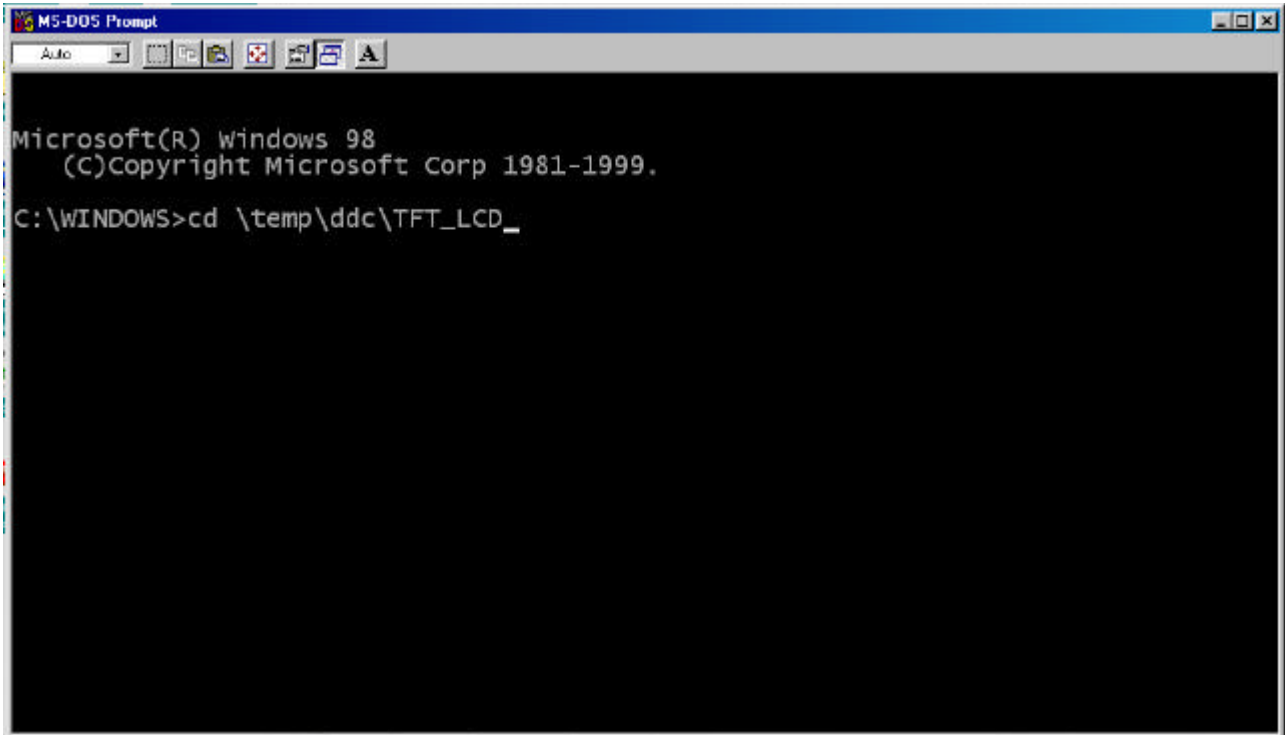


B. DDC Input Program

1. Move cursor to "MS-DOS Prompt" menu and execute it.



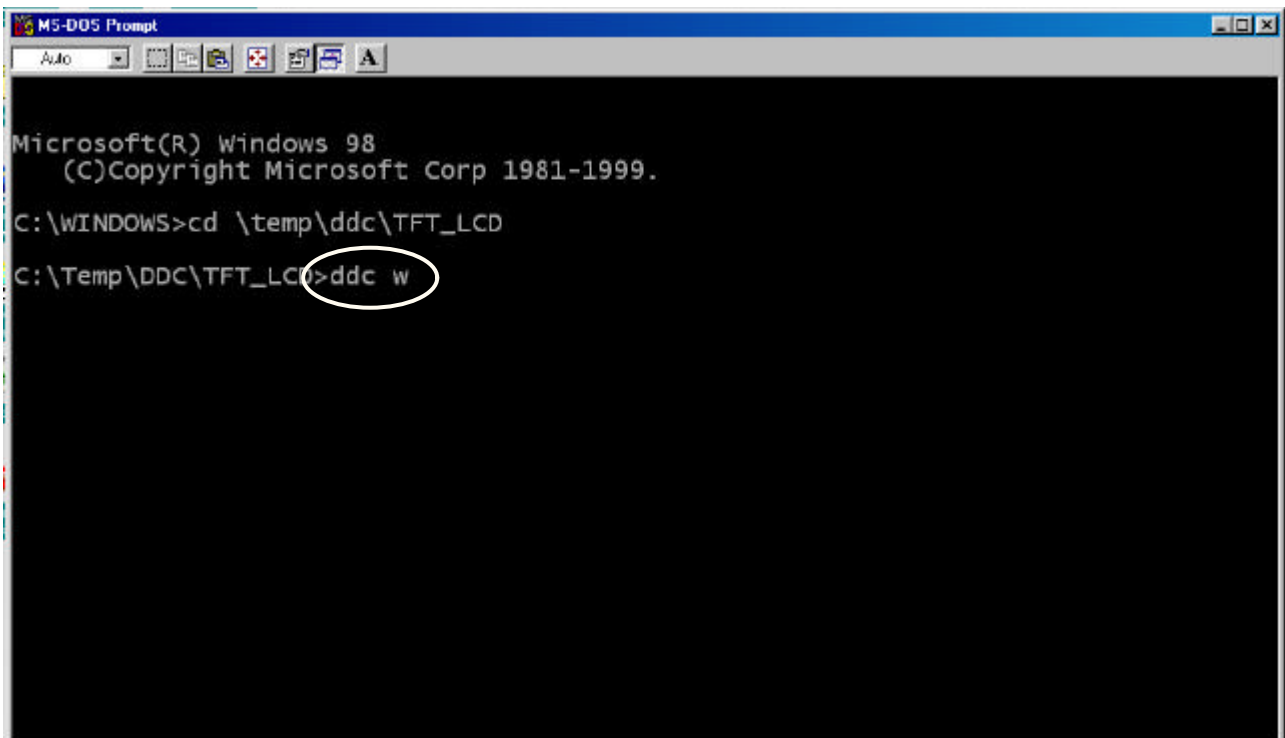
2. Move to the directory which contains DDC Program.



The screenshot shows a standard MS-DOS command prompt window. The title bar reads "MS-DOS Prompt". The window contains the following text: "Microsoft(R) Windows 98", "(C)Copyright Microsoft Corp 1981-1999.", and the command "C:\WINDOWS>cd \temp\ddc\TFT_LCD_" followed by a cursor.

```
Microsoft(R) Windows 98
(C)Copyright Microsoft Corp 1981-1999.
C:\WINDOWS>cd \temp\ddc\TFT_LCD_
```

3. Execute DDC.EXE program with option "w" to input DDC data.



The screenshot shows the MS-DOS command prompt window after the directory change. The text is: "Microsoft(R) Windows 98", "(C)Copyright Microsoft Corp 1981-1999.", "C:\WINDOWS>cd \temp\ddc\TFT_LCD", and "C:\Temp\DDC\TFT_LCD>ddc w". The command "ddc w" is circled in white.

```
Microsoft(R) Windows 98
(C)Copyright Microsoft Corp 1981-1999.
C:\WINDOWS>cd \temp\ddc\TFT_LCD
C:\Temp\DDC\TFT_LCD>ddc w
```

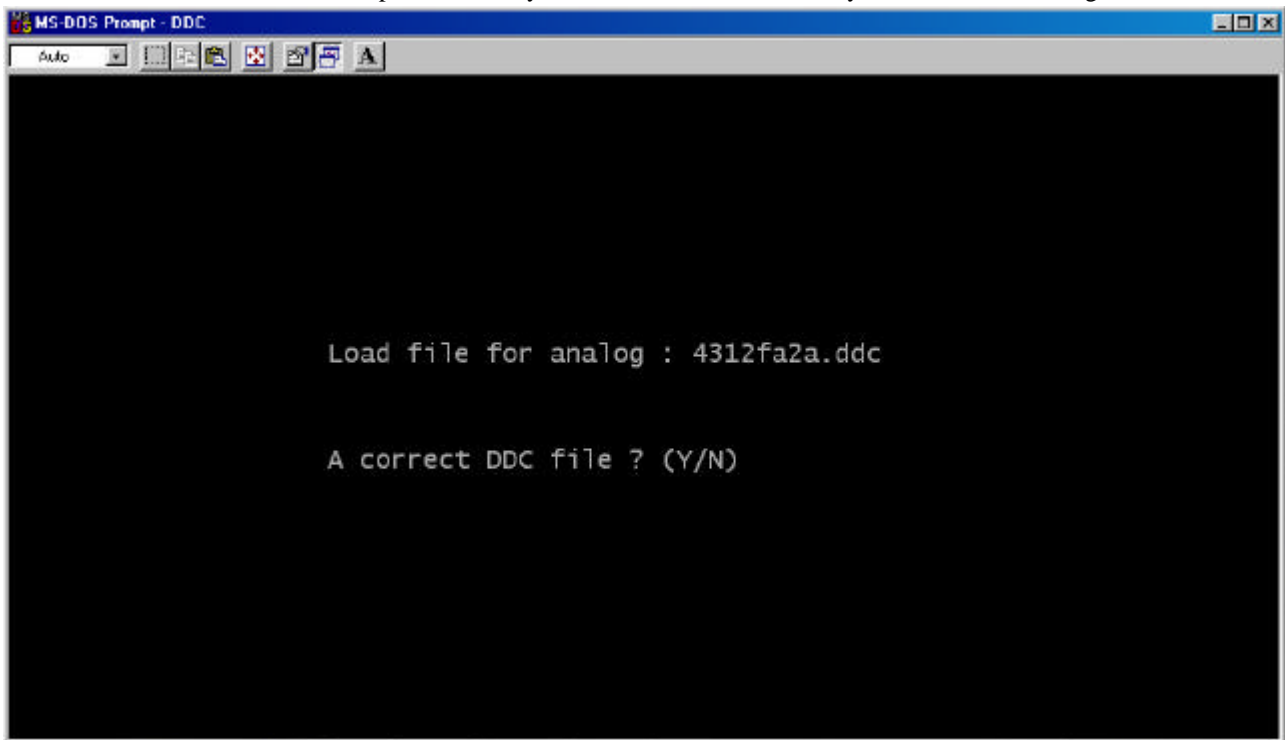
4. DDC Input program will be displayed on the screen.

```
MS-DOS Prompt - DDC
Auto
WRITE DDC PROGRAM BY SAMSUNG ELEC.Co.,LTD <Ver 4.15.10s>
Buyer: NULL [DATA FILE: ]
Mfr @@@ Name 0000 No 00000000 Week 0th OF 1990 Ver/Rev 0 / 0
00
Signal 0.7/0.3 ANALOG MONO DISP. DPMS support
Gamma 1.00 Size(H/V) 0cm / 0cm Sync support
RX 0 Ry 0 GX 0 Gy 0 BX 0 By 0 WX 0 Wy 0 Black Level ? No
Established timing support
720x400 @70Hz x 720x400 @88Hz x 640x480 @60Hz x 640x480 @67Hz x
640x480 @72Hz x 640x480 @75Hz x 800x600 @56Hz x 800x600 @60Hz x
800x600 @72Hz x 800x600 @75Hz x 832x624 @75Hz x 1024x768 i@87Hz x
1024x768 @60Hz x 1024x768 @70Hz x 1024x768 @75Hz x 1280x1024 @75Hz x
1152x870 @75Hz x
Detailed timing #1 ^ v Standard timing #2 Checksum A8h_
File [F5] Week [F6] BARCODE [F3] Det.T [P/UP,Dn] Stand.T [Home] Info [F1] Exit [F10]
```

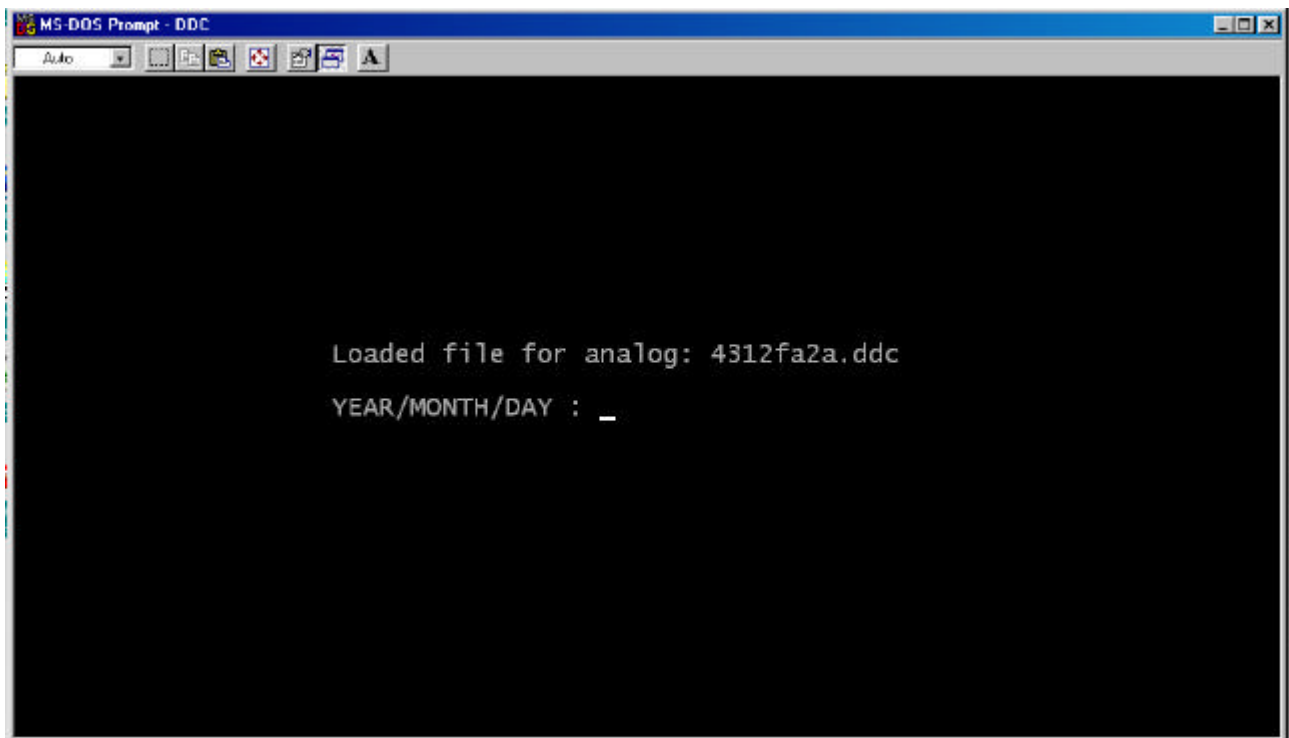
5. Press "F5" key to load DDC data file for the model and key in the file name as below.

```
MS-DOS Prompt - DDC
Auto
Load file for analog : 4312fa2a.ddc_
```

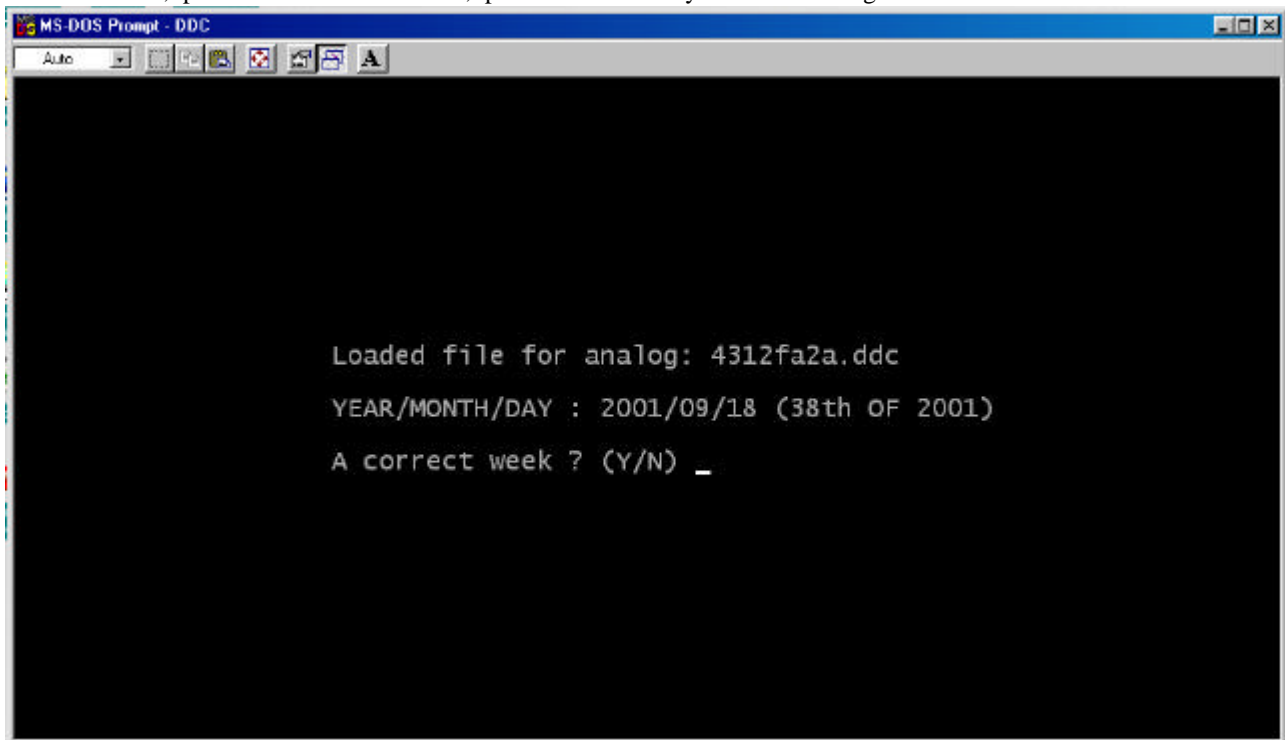
6. After key in the file name, the program ask you whether the file name is correct or not.
If the file name is correct, press "Y" key. If not, Press "N" and key in the file name again.



7. After key in above correct file name, the program ask you to key in Year/Month/Date as below.
In this step, you should check the manufacturing date of the monitor which you want to input DDC data and key in the manufacturing date or the date of same week.

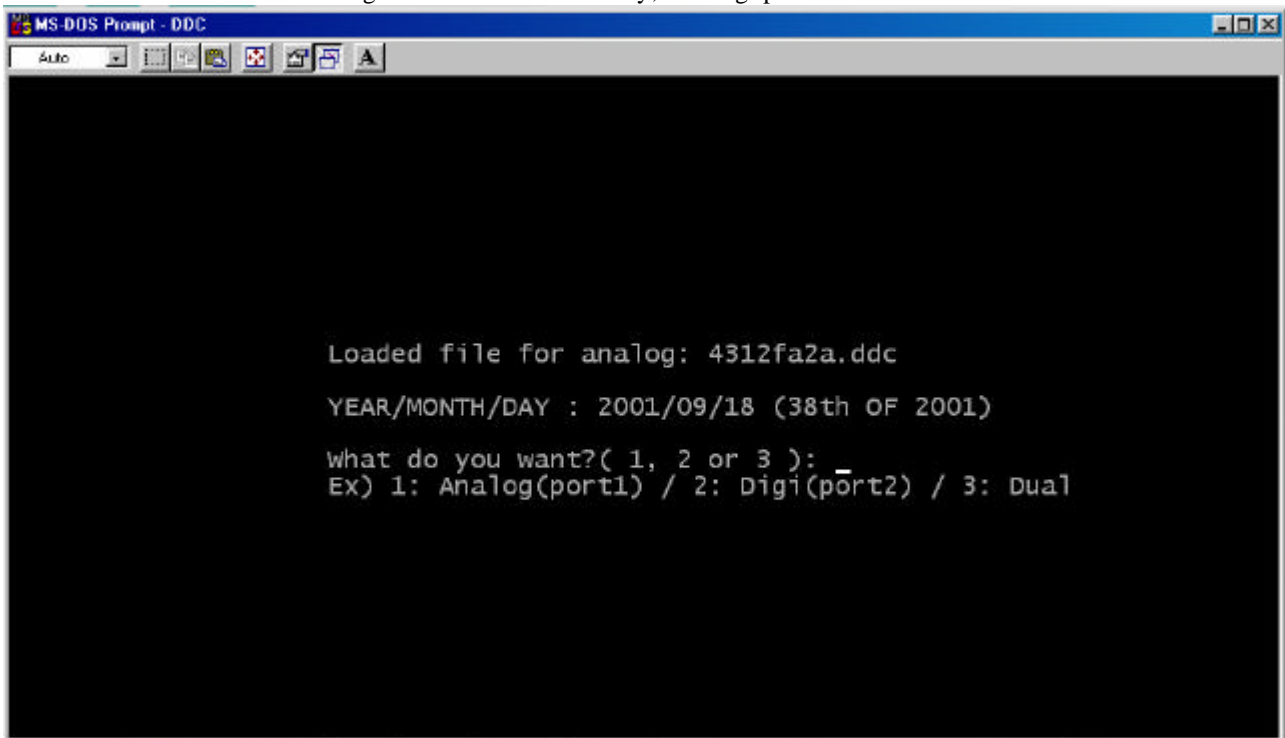


8. If you key in the date as below, the program also ask you whether the date is correct or not.
If correct, press "Y". If not correct, press "N" and key in the date again.



```
MS-DOS Prompt - DDC
Auto
Loaded file for analog: 4312fa2a.ddc
YEAR/MONTH/DAY : 2001/09/18 (38th OF 2001)
A correct week ? (Y/N) _
```

9. If you keyed in the date correctly and press "Y", the program ask you to select one of 3 port option.
According to your connection method, please select one among 3 option.
Some model don't have digital connector. Normally, Analog port is selected.



```
MS-DOS Prompt - DDC
Auto
Loaded file for analog: 4312fa2a.ddc
YEAR/MONTH/DAY : 2001/09/18 (38th OF 2001)
what do you want?( 1, 2 or 3 ):
Ex) 1: Analog(port1) / 2: Digi(port2) / 3: Dual
```

10. If you selected correct port option, you can see correct DDC program display as below.

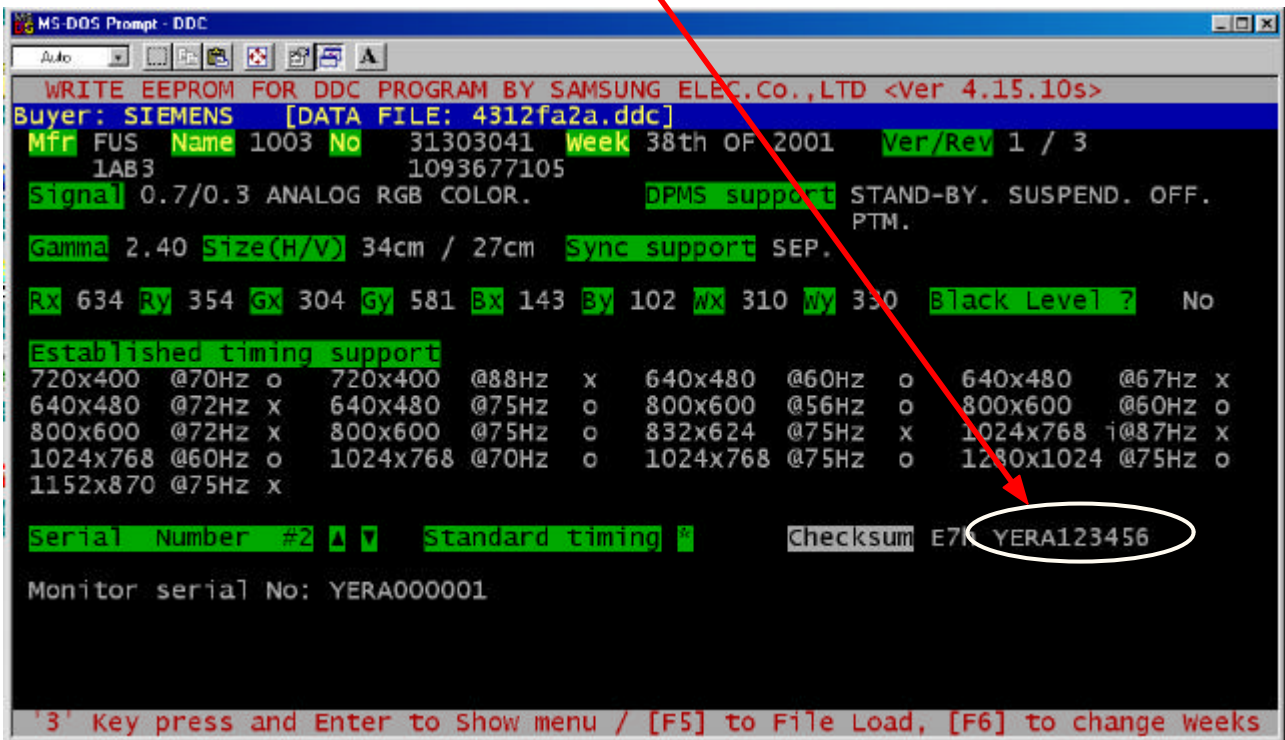
Correct DDC data was loaded as below. Please compare below screen with step 4.

```
MS-DOS Prompt - DDC
Auto
WRITE EEPROM FOR DDC PROGRAM BY SAMSUNG ELEC.Co.,LTD <Ver 4.15.10s>
Buyer: SIEMENS [DATA FILE: 4312fa2a.ddc]
Mfr FUS Name 1003 No 31303041 Week 38th OF 2001 Ver/Rev 1 / 3
LAB3 1093677105
Signal 0.7/0.3 ANALOG RGB COLOR. DPMS support STAND-BY. SUSPEND. OFF.
PTM.
Gamma 2.40 Size(H/V) 34cm / 27cm Sync support SEP.
RX 634 Ry 354 GX 304 Gy 581 BX 143 By 102 WX 310 Wy 330 Black Level ? No
Established timing support
720x400 @70Hz o 720x400 @88Hz x 640x480 @60Hz o 640x480 @67Hz x
640x480 @72Hz x 640x480 @75Hz o 800x600 @56Hz o 800x600 @60Hz o
800x600 @72Hz x 800x600 @75Hz o 832x624 @75Hz x 1024x768 i@87Hz x
1024x768 @60Hz o 1024x768 @70Hz o 1024x768 @75Hz o 1280x1024 @75Hz o
1152x870 @75Hz x
Serial Number #2 Standard timing Checksum E7h
Monitor serial No: YERA000001
File[F5] week[F6] BARCODE[F3] Det.T[P/UP,Dn] Stand.T[Home] Info[F1] Exit[F10]
```

11. To input DDC data, please press "F3" key.

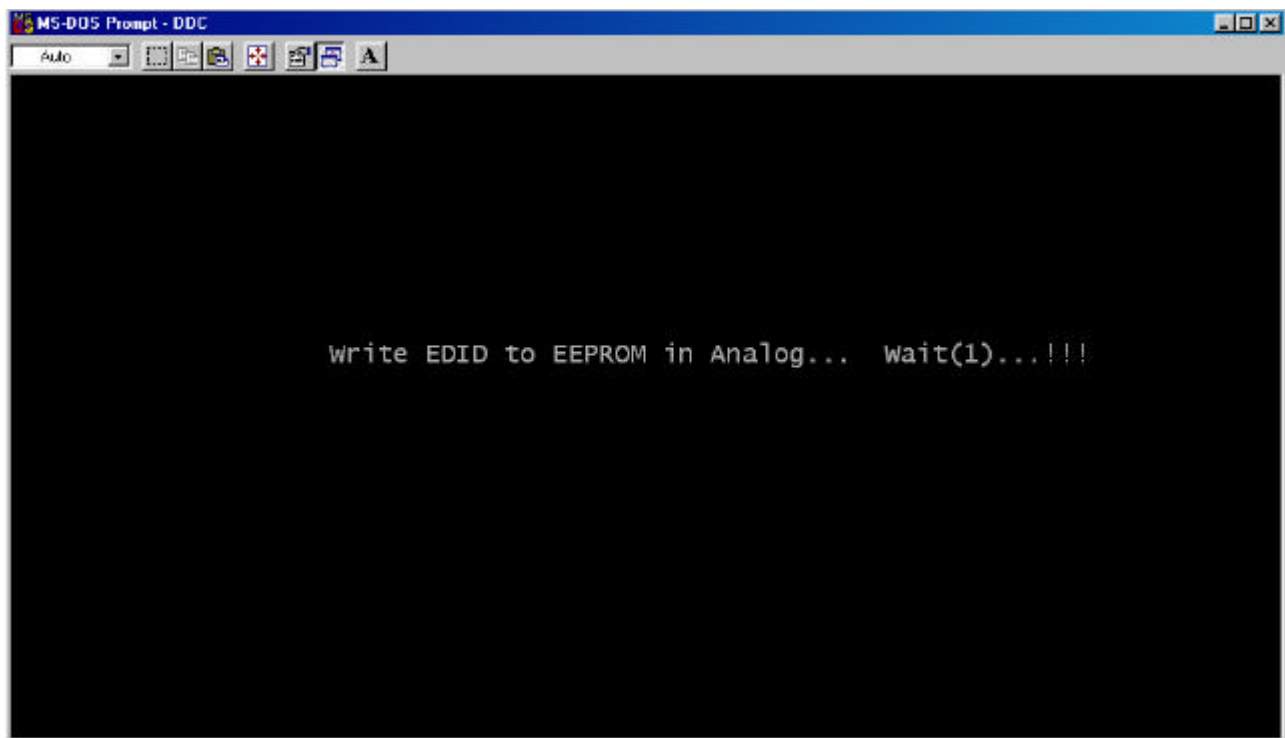
```
MS-DOS Prompt - DDC
Auto
WRITE EEPROM FOR DDC PROGRAM BY SAMSUNG ELEC.Co.,LTD <Ver 4.15.10s>
Buyer: SIEMENS [DATA FILE: 4312fa2a.ddc]
Mfr FUS Name 1003 No 31303041 Week 38th OF 2001 Ver/Rev 1 / 3
LAB3 1093677105
Signal 0.7/0.3 ANALOG RGB COLOR. DPMS support STAND-BY. SUSPEND. OFF.
PTM.
Gamma 2.40 Size(H/V) 34cm / 27cm Sync support SEP.
RX 634 Ry 354 GX 304 Gy 581 BX 143 By 102 WX 310 Wy 330 Black Level ? No
Established timing support
720x400 @70Hz o 720x400 @88Hz x 640x480 @60Hz o 640x480 @67Hz x
640x480 @72Hz x 640x480 @75Hz o 800x600 @56Hz o 800x600 @60Hz o
800x600 @72Hz x 800x600 @75Hz o 832x624 @75Hz x 1024x768 i@87Hz x
1024x768 @60Hz o 1024x768 @70Hz o 1024x768 @75Hz o 1280x1024 @75Hz o
1152x870 @75Hz x
Serial Number #2 Standard timing Checksum E7h
Monitor serial No: YERA000001
'3' Key press and Enter to show menu / [F5] to File Load, [F6] to change weeks
```

12. On DDC input screen, please key in the serial # at the rating label on the rear cover of the monitor.
You should key in the serial # 2 times.



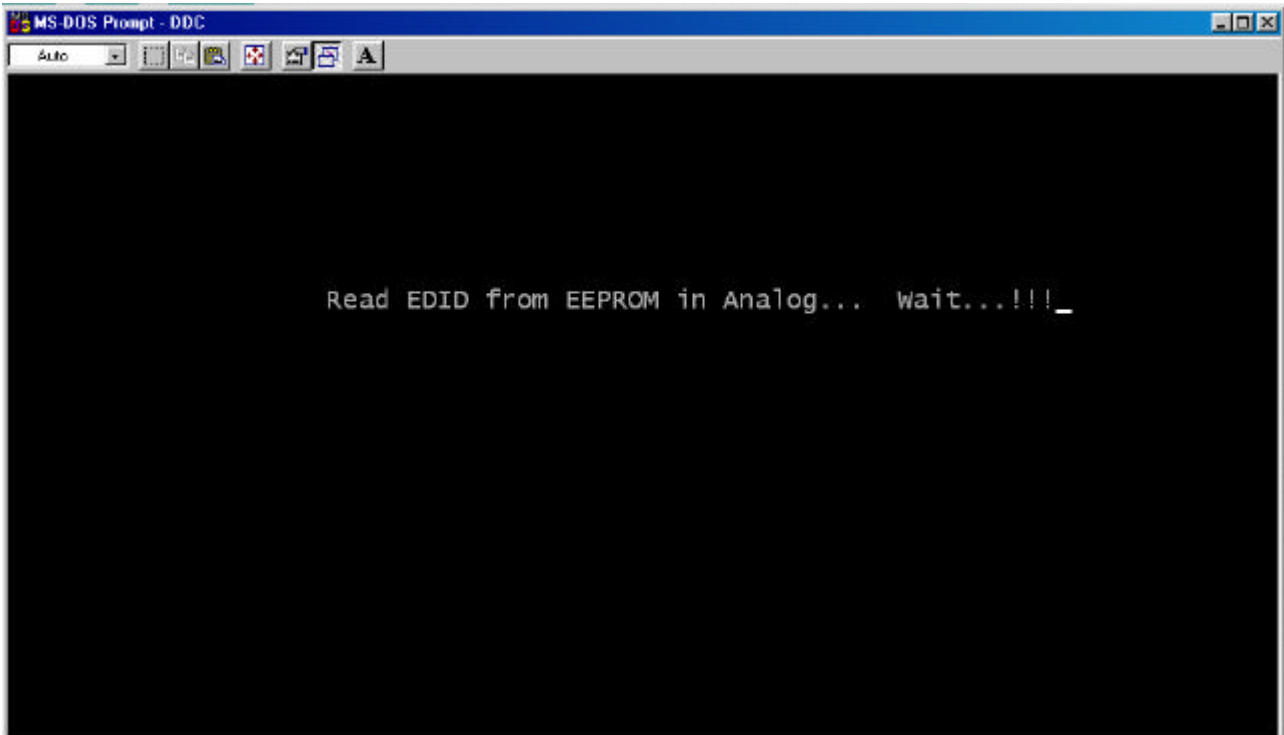
```
MS-DOS Prompt - DDC
Auto
WRITE EEPROM FOR DDC PROGRAM BY SAMSUNG ELEC.Co.,LTD <Ver 4.15.10s>
Buyer: SIEMENS [DATA FILE: 4312fa2a.ddc]
Mfr FUS Name 1003 No 31303041 Week 38th OF 2001 Ver/Rev 1 / 3
LAB3 1093677105
Signal 0.7/0.3 ANALOG RGB COLOR. DPMS support STAND-BY. SUSPEND. OFF.
Gamma 2.40 Size(H/V) 34cm / 27cm Sync support SEP.
Rx 634 Ry 354 Gx 304 Gy 581 Bx 143 By 102 Wx 310 Wy 330 Black Level ? No
Established timing support
720x400 @70Hz o 720x400 @88Hz x 640x480 @60Hz o 640x480 @67Hz x
640x480 @72Hz x 640x480 @75Hz o 800x600 @56Hz o 800x600 @60Hz o
800x600 @72Hz x 800x600 @75Hz o 832x624 @75Hz x 1024x768 i@87Hz x
1024x768 @60Hz o 1024x768 @70Hz o 1024x768 @75Hz o 1280x1024 @75Hz o
1152x870 @75Hz x
Serial Number #2 ▲ ▼ Standard timing # Checksum E71 YERA123456
Monitor serial No: YERA000001
'3' Key press and Enter to Show menu / [F5] to File Load, [F6] to change weeks
```

13. The program is writing the DDC data to EEPROM on the monitor.



```
MS-DOS Prompt - DDC
Auto
write EDID to EEPROM in Analog... wait(1)...!!!
```

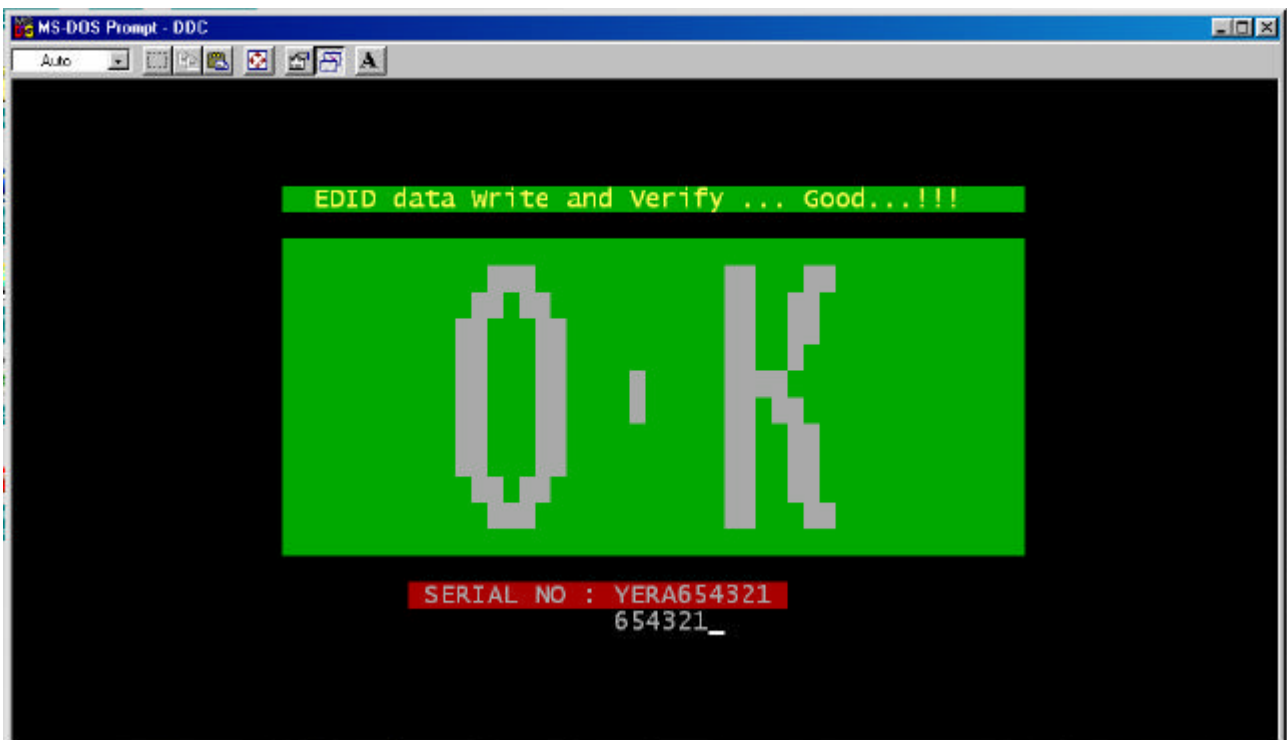

14. The program is reading the DDC data from EEPROM on the monitor.



15. If you connected the softjig as above diagram and key in all of data correctly, you can see below "OK" message.

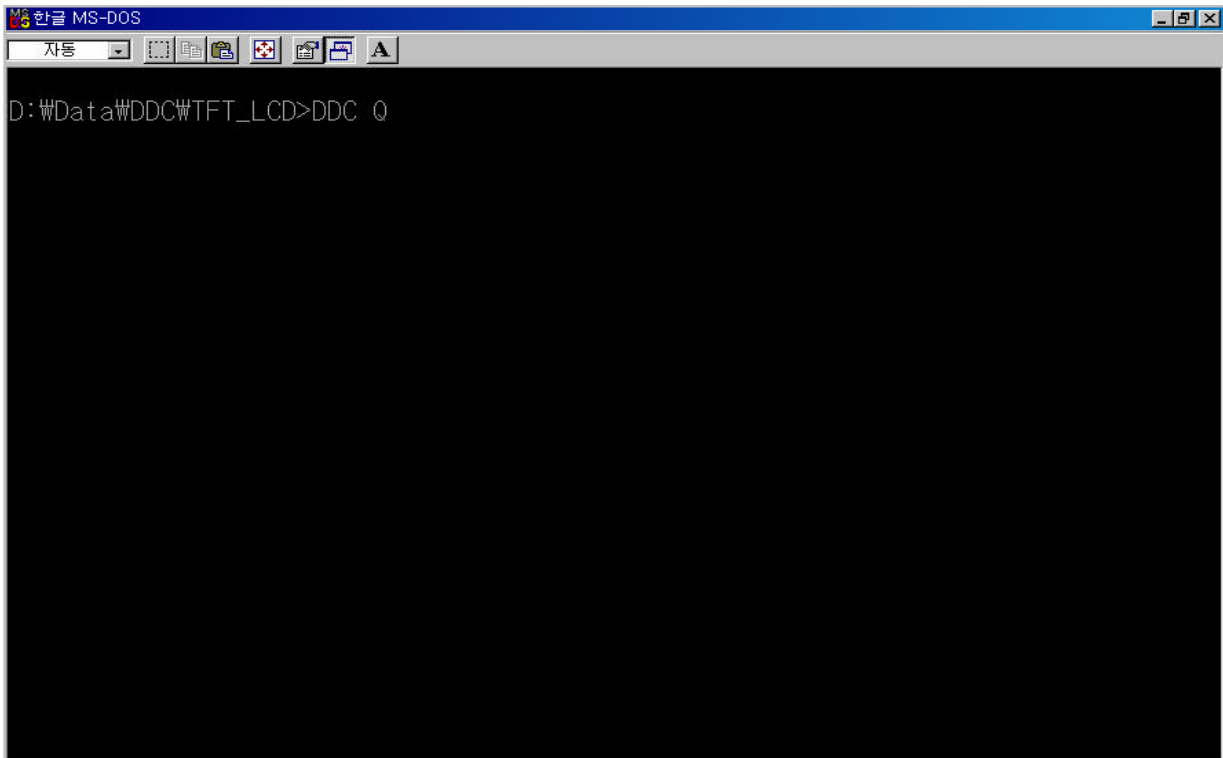
The DDC data was inputted to EEPROM perfectly.

If you see an error message, please check softjig connection, DDC file name, date, port, serial #, etc.



Monitor DDC Check Instructions

16. Execute DDC.EXE program with option "Q" to check DDC data.



17. DDC Check program will be displayed on the screen.



